

ParVag

Static weighing software



- Windows 95, 98, Me, 2000, XP environment ensures sharp learning curves
- Autonomy regarding other applications- there's no need to use additional data analysis software, ParVag software is sufficient for measurement, data analysis and report printing. Data could be exported into file types recognizable by other Windows applications.

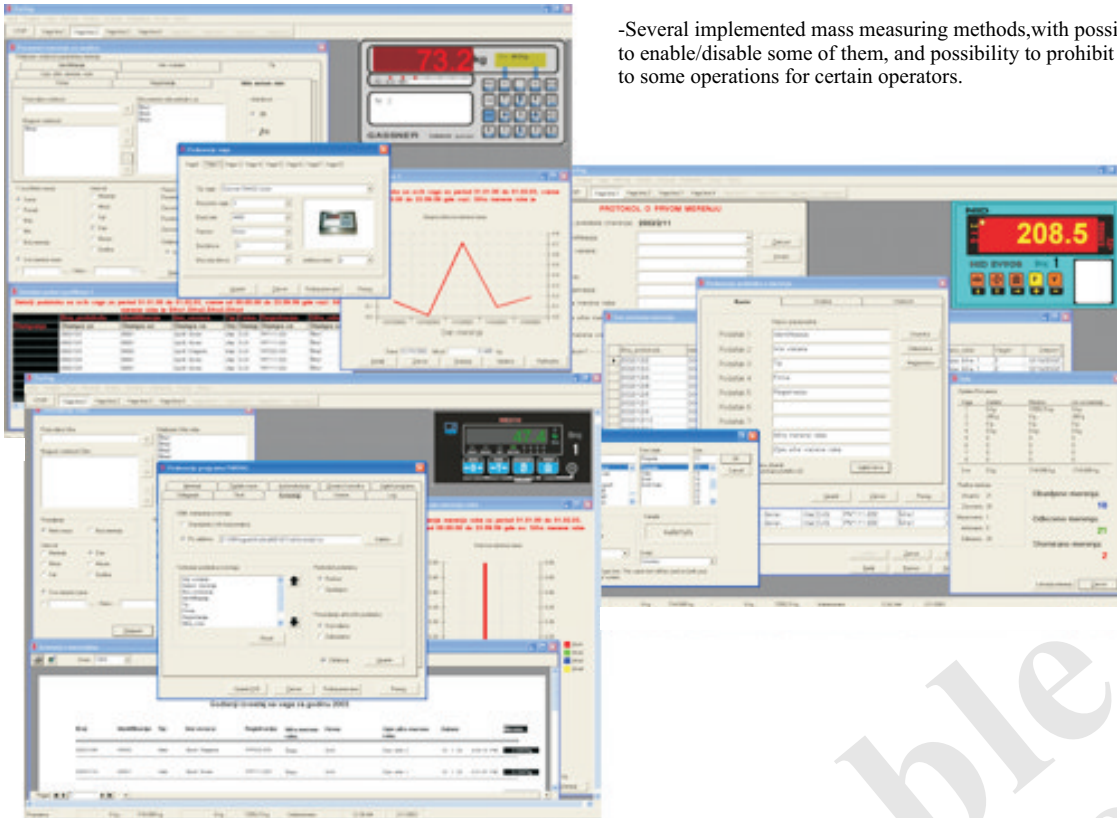
Password protected user access, with four level and twelve independent passwords, that prevents data misuse and mistakes caused by lack of experience.

- Completely and simply programmable user interface, according to users habits, affinities, and needs.
- Many measurement algorithms implemented, enabling insight to many weighing technologies.

- Serial communication with up to eight scales of the same or different types (connected to same or different com ports), according to RS232 and/or RS485 standard. Upon customer's request, the total number of connected scales could be increased.
- Graphical presentation of scale module and mode of operation in software resembles that of particular physical scale.
- Scale remote control possibility, including control panel operations and on-line operations performed the same way as on "real" scale.
- Completely autonomous operation of scale module with the respect to other applications, enabled by design that includes ActiveX controls, applicable in other applications, too.

- Nine completely programmable parameters that describe measured load.
- Parameter name and properties setup, as well as default values setup, thus making the software applicable in all weighing applications (trucks or railroad vehicles, warehouse, etc.) with only minor changes in software setup, that could be made by operators.
- Prompt measured data acquiring, enabled by set of possible parameter values, describing load, making possible for high frequency measurement.

-Measurement note (tag) could be printed in several forms, and customer also could design own forms, with advanced possibilities, such are: change background of the tag, logo insert, and specific fonts for measured data. Tag design is done within built-in graphic design software.



-Several implemented mass measuring methods, with possibility to enable/disable some of them, and possibility to prohibit access to some operations for certain operators.

- High measurement automation, enabled by user ID's and automated load identification (bar code and other scanners, smart cards and tags, etc) or manual identification, that, in turn, accelerate and simplify measuring process, and upgrade data reliability.
- Enabled scale load/discharge chart recording (useful for scales on bins or reservoirs)
- Weighing goods ID data base according to customer's needs, that could be populated and edited.
- Measured data storing, using file formats protected against unauthorized access, with possibility to make copies, recognizable by other data base applications.

-Measurement reports that display average information, both timewise, and parametric- customer analysis, measured goods analysis, etc. You can customize these reports within ParVag, making unique and original measurement reports. Also, you can adapt these reports in order to be archived in paper form.

-Autonomous analysis of measurements carried out, in order to obtain statistical data important for bookkeeping, production planning, and purchase. Measured data analysis available in table and chart form.

<http://www.softel.co.yu>
yusoftel@eunet.yu
Vojvode Misica 23/4
35250 Paracin
Serbia
xx381 (0)35 568 953
xx381 (0)63 696 816